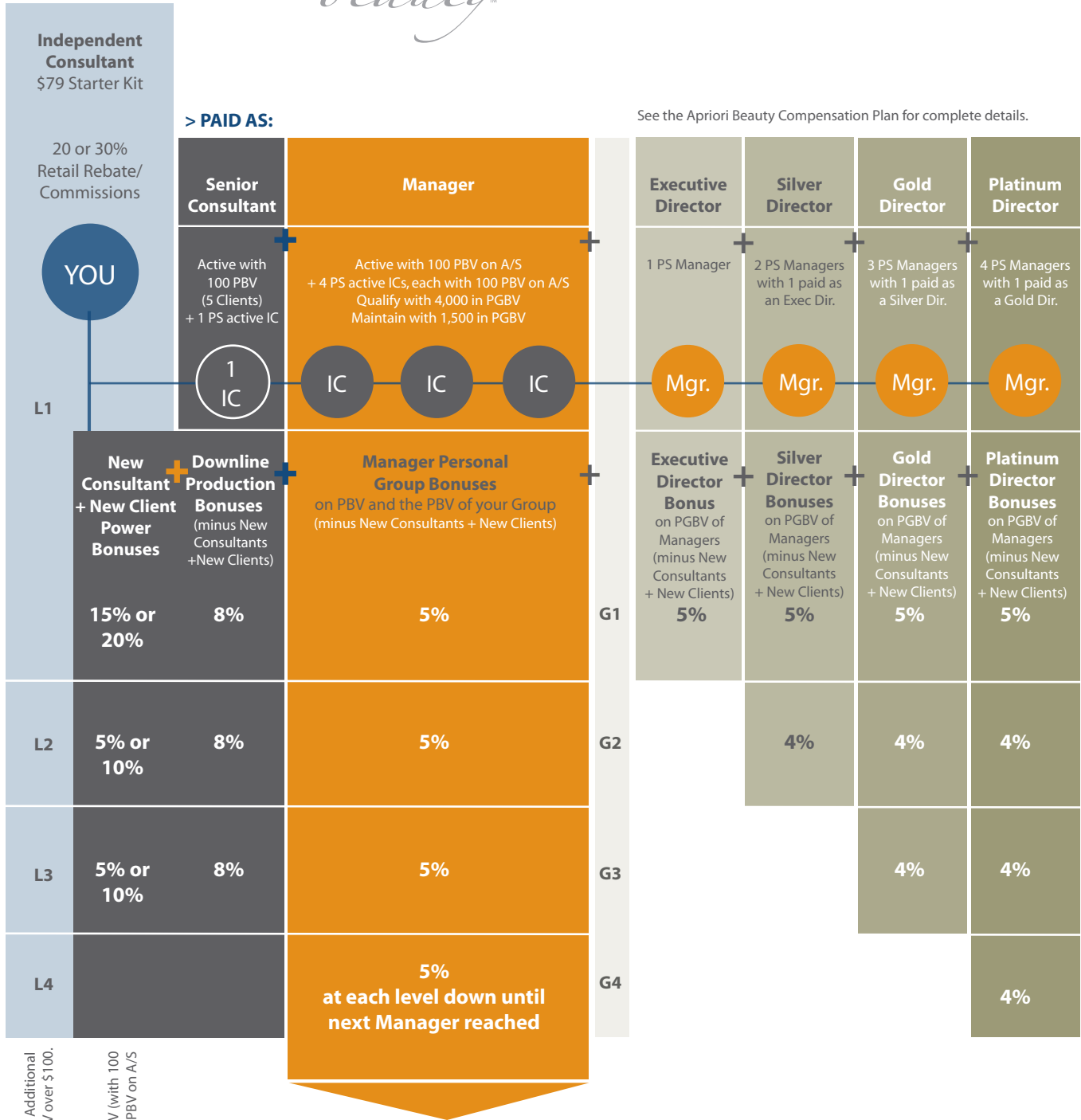




# COMPENSATION PLAN SUMMARY



20% Retail Commission paid weekly on PRV. Additional 10% Retail Commission paid monthly on PRV over \$100.

Achieve maximum Power Bonuses with 200 PBV (with 100 on A/S) and at least 2 PS active ICs each with 100 PBV on A/S

+ The Apriori Beauty Compensation Plan rewards you as you build your business. As you add Independent Consultants to your L1, you build to Manager. As you add Managers, you build to the different levels of Director.

Your Bonuses also build. As you build to Director, you still receive Retail Commissions, the New Consultant Power Bonuses, Downline Production Bonuses and the Manager Personal Group Bonuses.